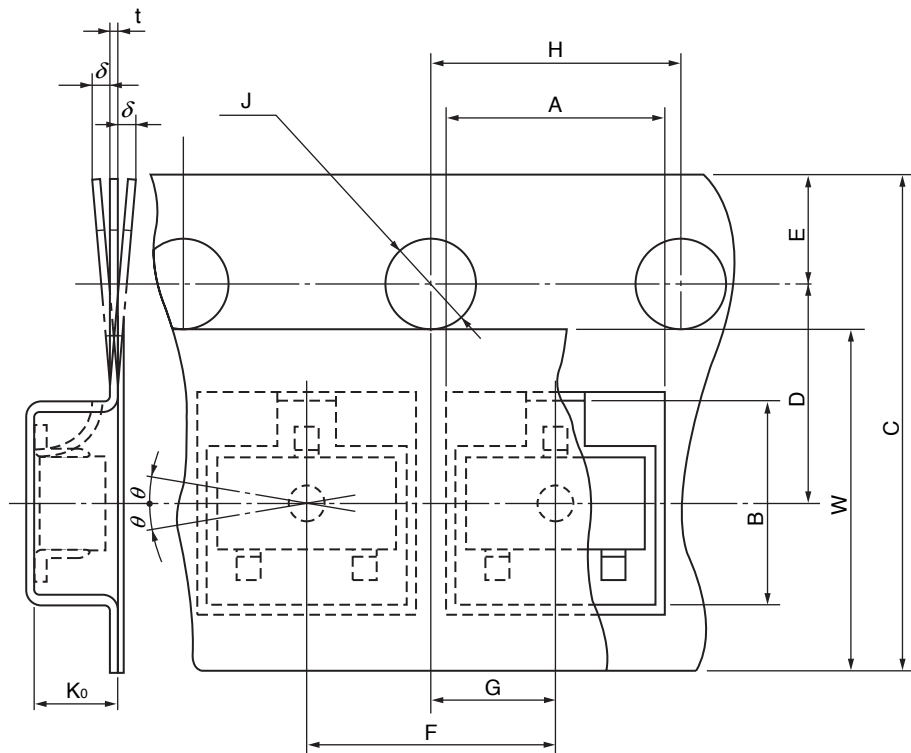


SC-75 (USM)
SC-89 (TUSM)



UNIT : mm

ITEM	SYMBOL	SIZE	REMARKS
Depression Angular Hole for Device Insertion	Length	A	$1.8^{+0.1}_{-0.1}$ Opening Size
	Width	B	$1.9^{+0.1}_{-0.1}$ Opening Size
	Depth	K ₀	0.9 ± 0.1 Inner Space
	Pitch	F	4.0 ± 0.1 Accumulative Pitch ± 0.2 MAX./10 Pitch
Round Hole for Feeding	Diameter	J	$\phi 1.5^{+0.1}_{-0}$
	Pitch	H	4.0 ± 0.1 Accumulative Pitch ± 0.2 MAX./10 Pitch
	Position	E	1.75 ± 0.1
Distance Between Center-lines	Length Direction	G	2.0 ± 0.05
	Width Direction	D	3.5 ± 0.05
Cover Tape	Width	W	5.5 ± 0.1 Thickness : 0.1 MAX.
Carrier Tape	Width	C	8.0 ± 0.2 Warpage δ : 0.3 MAX.
	Thickness	t	0.2 ± 0.05
Device	Tilt	θ	30° MAX.